



Industrial endoscope

# ISV-130U

## SPECIFICATION

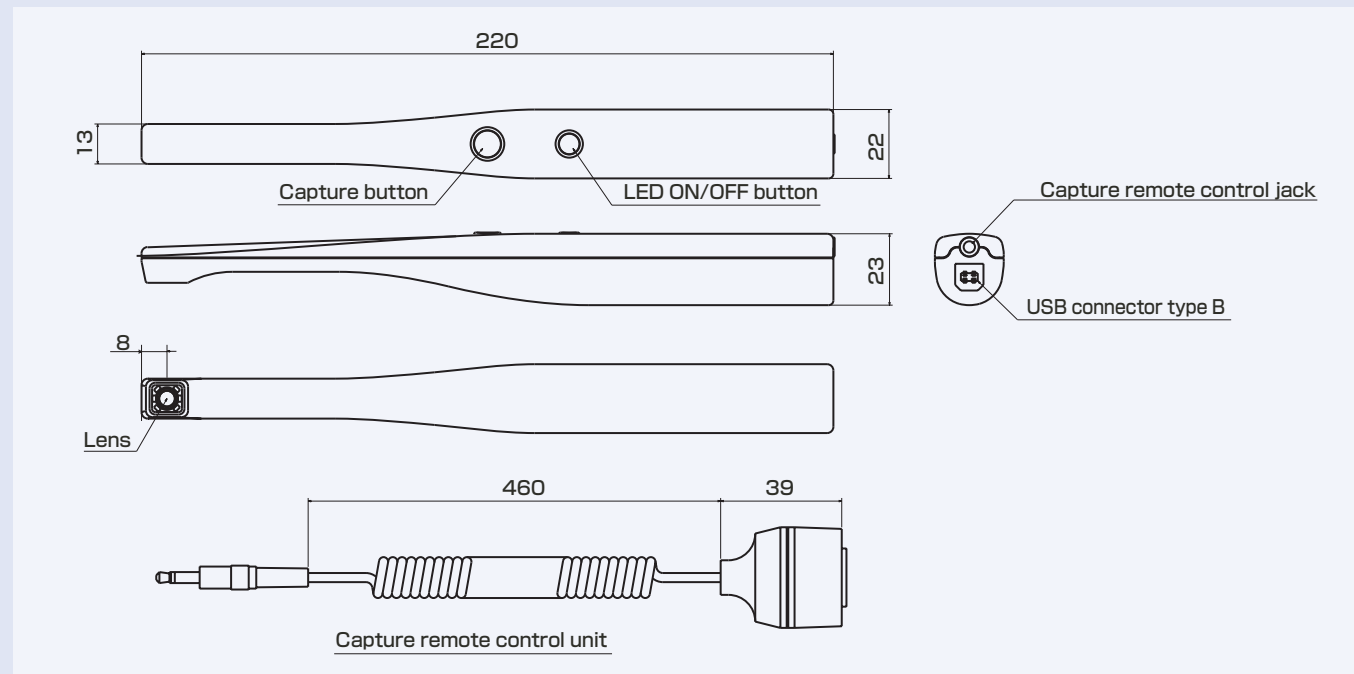
### 1) Device

Model	ISV-130U
Power Source	PC USB bus power. No need for external power supply
Image Pick-up Device	1/4" CMOS sensor
Effective Pixels	1280(H) x 1024(V) active imaging pixels
Scanning	Internal synchronization
Light source	6 element white LED
Interface	High-speed USB2.0 (480Mb/s)
OS	Win/2000/XP/Vista
Operating Temperature	-5°C to +50°C
Dimensions	220x22x23 (mm)
Weight	40g (Camera only)

### 2) Software

Model	ISV-VS1
Resolution	Live&Snap shot: 160x120, 320x240, 640x480, 800x600, 1024x768, 1280x1024
Control	Video format, Brightness, Contrast, Gamma, Hue, Saturation, Aperture, White balance Auto/Manual, Mirroring, Top and bottom inversion, Sense up, Anti flicker, Electric Zoom, etc.,
Measurement	Calibration, Length, Angle, Circle, Line, Comment
Supported Formats	BMP, PNG, JPG

## DIMENSION

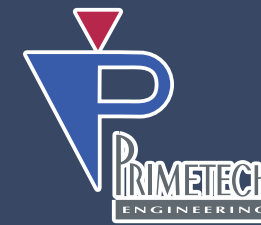


**PRIMETECH**  
ENGINEERING [www.pte.jp](http://www.pte.jp)  
**PRIMETECH ENGINEERING CORP.**  
Ts93Bldg, 3F, 4-2-6, Kohinata,  
Bunkyo-Ku, Tokyo 112-0006, Japan  
TEL : +81-3-5805-6766  
FAX : +81-3-5805-6767  
E-Mail : eigyo@pte.jp

**PRIMETECH ENGINEERING FACTORY OF YOKOHAMA.**  
Sannomori Town Bldg.2F, 108-7, Sanmaicho,  
Kanagaw-ku, Yokohama-City, Kanagawa  
221-0862, Japan  
TEL : +81-45-488-6421 FAX : +81-45-413-5144

**PRIMETECH KOREA.**  
Address (Zip code:463-825):  
2318 Bobos Chereville Bldg, 5-2 Sunae-dong,  
Bundang-gu, Seongnam-si, Gyeonggi-do, Korea.  
TEL : +82-31-719-7223 E-Mail : sdlee@primeview.co.kr

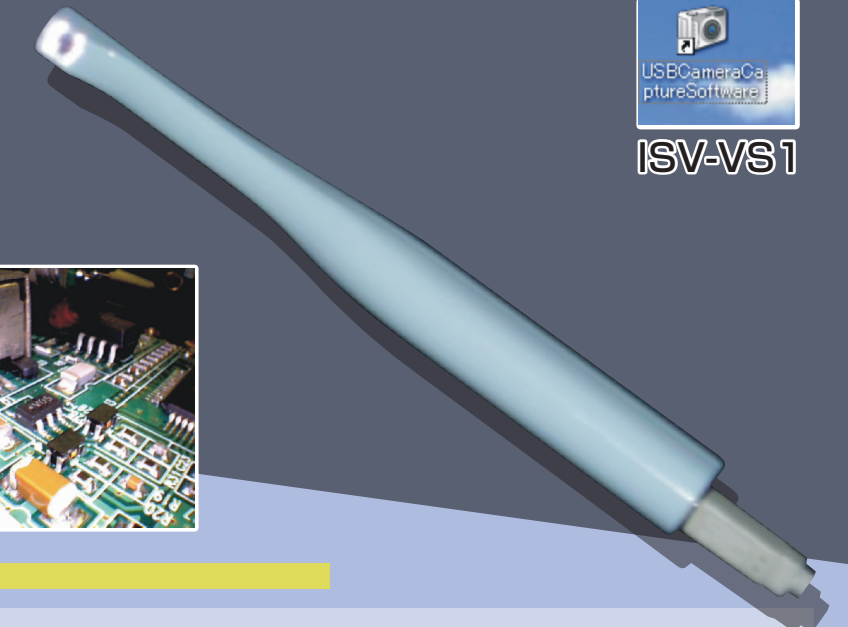
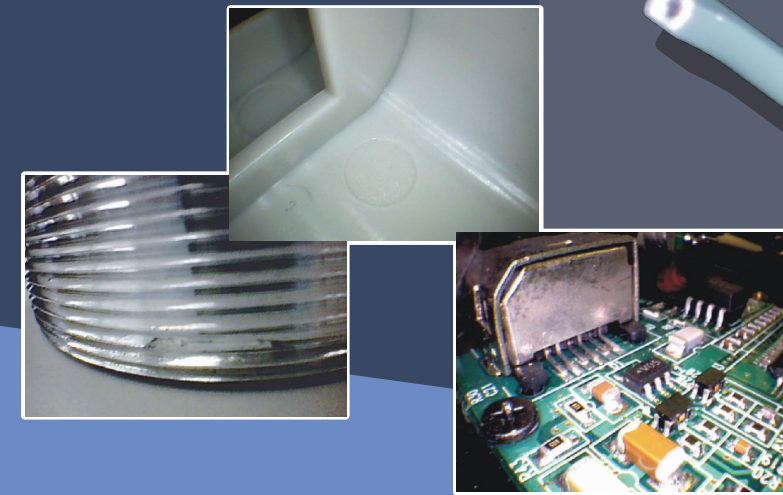
**DISTRIBUTED BY**  
**Ikas, Incorporated**  
6303 Owensmouth Ave., 10th Fl.  
Woodland Hills, CA 91367  
TEL : 1-818-882-4116  
FAX : 1-818-341-6466  
E-Mail : sales@ikasinc.com



# Industrial endoscope ISV-130U



ISV-VS1



## Features

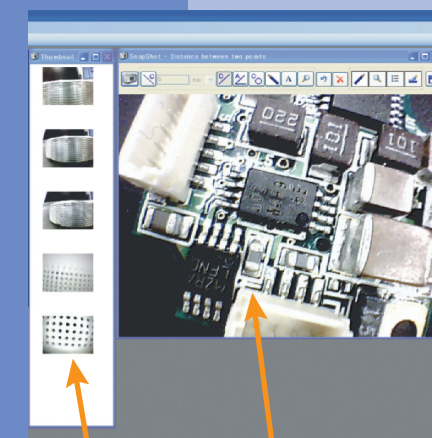
- **Ease-of-use**  
Ergonomic and light-weight (40g), reduces user fatigue.
- **High-quality picture**  
Featuring a 1.3M pixel CMOS sensor and six ultra-bright white LEDs, pictures are of high-quality and high-resolution.
- **Versatility**  
Partial water resistance (up to 10cm from tip) and splash resistant (IPX4).
- **Side view**  
Lens located on the side of the endoscope so that user can observe different angles, even in the smallest of spaces.
- **Magnification.**  
25x mag (20" SXGA).
- **Image Capture Switch**  
Equipped with an external capture switch which allows for image capture without blurring which can be caused by movement of the endoscope during capture.
- **Eliminate halation**  
When operating in high-sensitivity mode, halation - patchy/excessive glow - is eliminated.
- **Flip function**  
Orientation of image can be adjusted (right/left invert, top/bottom invert) to observe image in most suitable position for the user.



## Additional Feature (with use of included software)



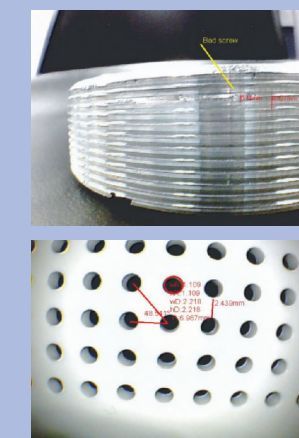
Liveview window



Thumbnail

Capture & measurement Window

## Measurement function



From captured images, the include software can calculate:

- Calibration.
- Length
- Circumference
- Angle

Software allows user to edit image captures with notes and/or comments